

CHARMILL

RESIDENTIAL



Fulham Palace Road, London, W6

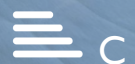
£425

****Bills Included**** A one-bedroom apartment arranged on the first floor above commercial premises on Fulham Palace Road. The property comprises a reception room with wooden flooring, separate fitted kitchen, double bedroom with ample storage and a tiled bathroom suite.

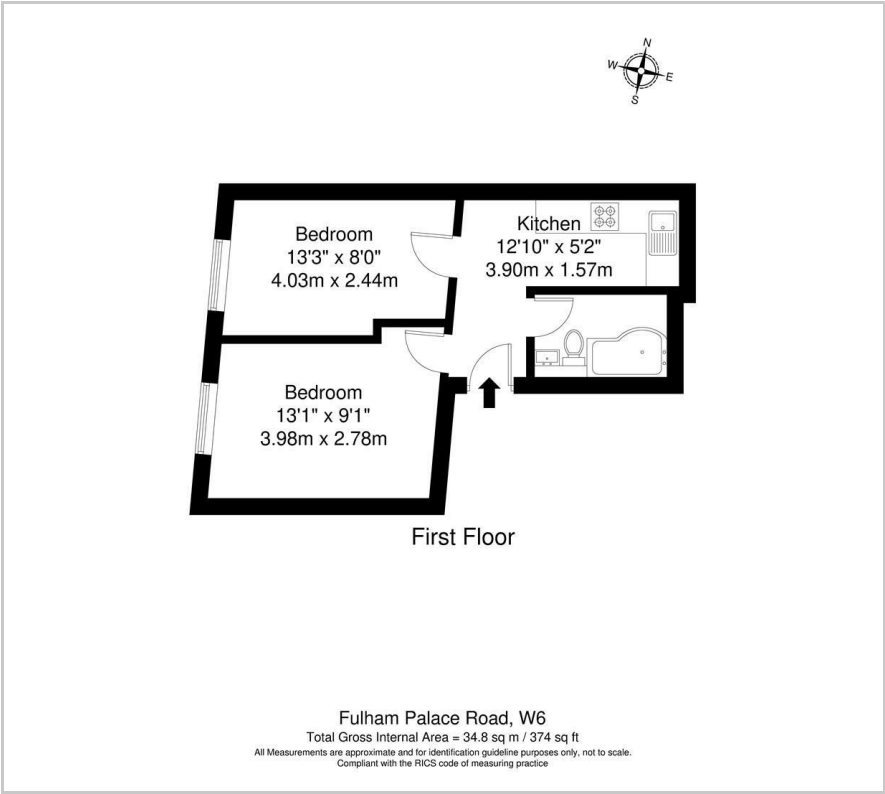
- One bedroom
- First floor
- Wooden flooring
- Double glazing

Viewing

Please contact us on 020 7046 6276 if you wish to arrange a viewing appointment for this property or require further information.



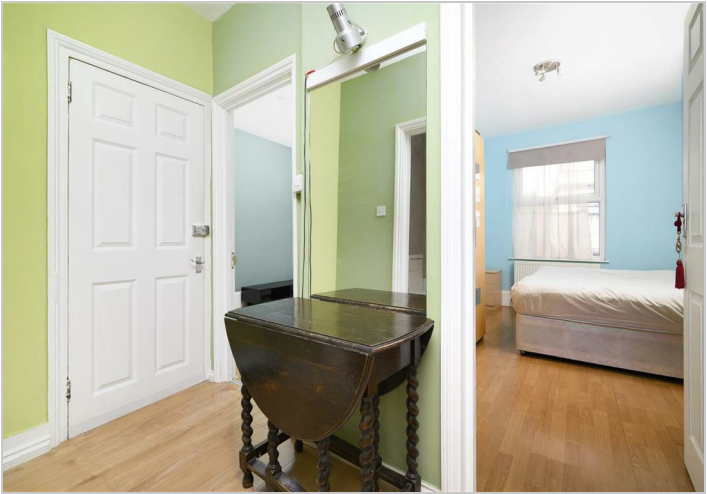
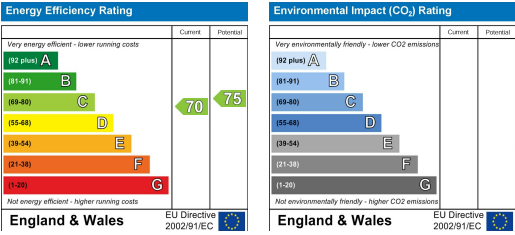
Floor Plan



Area Map



Energy Efficiency Graph



These particulars, whilst believed to be accurate are set out as a general outline only for guidance and do not constitute any part of an offer or contract. Intending purchasers should not rely on them as statements of representation of fact, but must satisfy themselves by inspection or otherwise as to their accuracy. No person in this firm's employment has the authority to make or give any representation or warranty in respect of the property.

020 7046 6276 • lettings@charmillresidential.co.uk • 51 Maida Vale, Little Venice, London W9 1SD
charmillresidential.co.uk